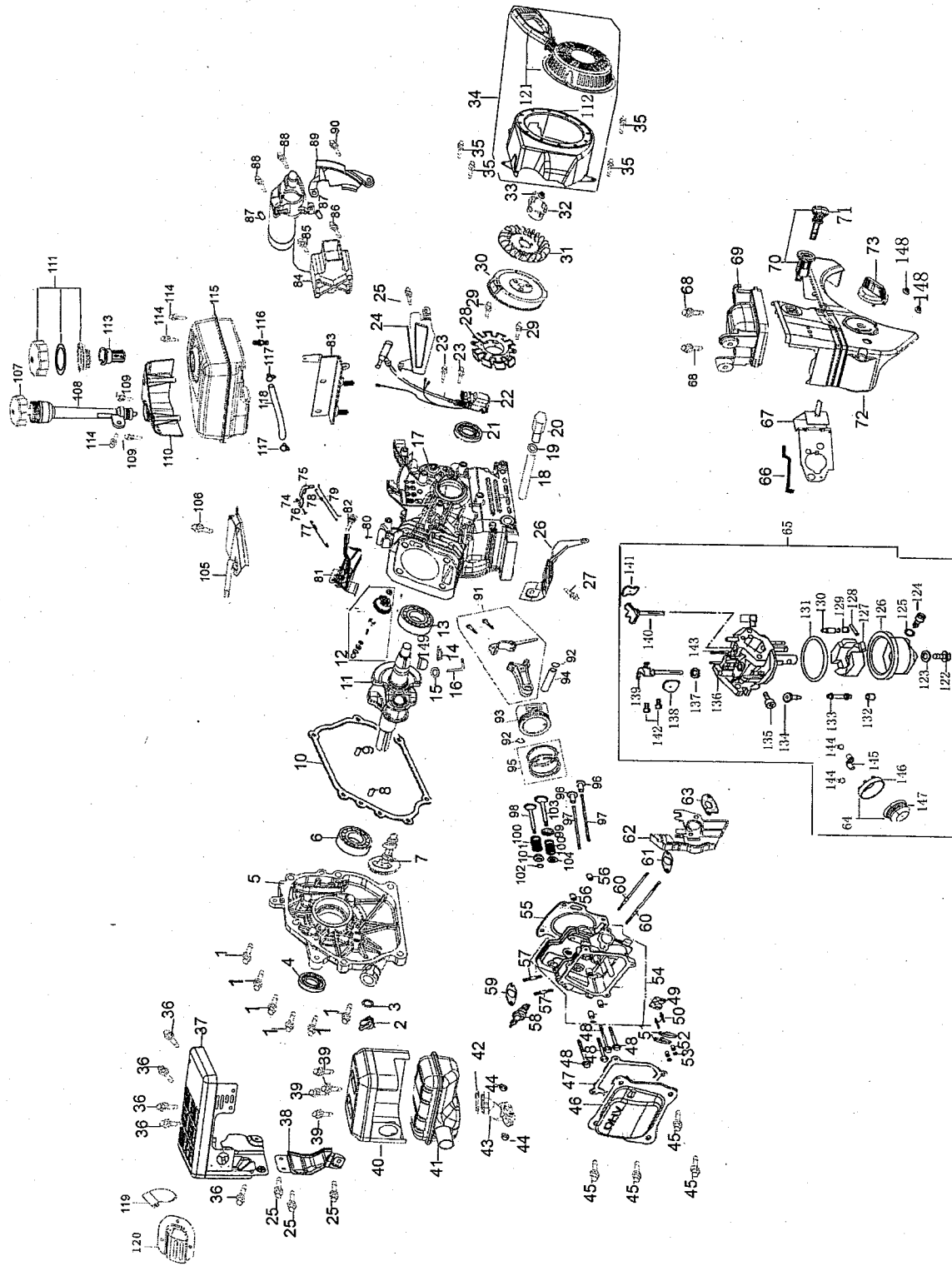


# 179/208 cc ZS 365/370-SUA Engine



## 179/208 cc ZS 365/370-SUA Engine

| Part No.  | Description                 | Ref. No. |
|-----------|-----------------------------|----------|
| 751-10724 | Short Block Assembly        | —        |
|           | Bolt                        | 1        |
|           | Oil Filler Plug             | 2        |
|           | O-ring                      | 3        |
|           | Oil seal, 25 × 41.25 × 6    | 4        |
|           | Crankcase cover             | 5        |
|           | Radial Ball Bearing         | 6        |
|           | Camshaft Assembly           | 7        |
|           | Dowel Pin, 9 × 14           | 8        |
|           | Dowel Pin, 7 × 14           | 9        |
|           | Crankcase Cover Gasket      | 10       |
|           | Crankshaft Complete         | 11       |
|           | Governor Kit                | 12       |
|           | Radial Ball Bearing         | 13       |
|           | Pin Lock                    | 14       |
|           | O-ring, 5.2 × 1.9           | 15       |
|           | Governor Arm                | 16       |
|           | Crankcase                   | 17       |
|           | Oil-Draining Pipe           | 18       |
|           | Washer, 10 × 16 × 1.5       | 19       |
|           | Drain Bolt, 10 × 1.25       | 20       |
|           | Oil Seal, 25 × 41.25 × 6    | 21       |
|           | Cylinder Head Gasket        | 55       |
|           | Dowel Pin, 10 × 16          | 56       |
|           | Gasket Muffler              | 59       |
|           | Insulator Gasket Carburetor | 61       |
|           | Insulator Carburetor        | 62       |
|           | Connecting Rod Assembly     | 91       |
|           | Piston Pin Clip             | 92       |
|           | Piston                      | 93       |
|           | Pin Piston                  | 94       |

| Part No.  | Description                    | Ref. No. |
|-----------|--------------------------------|----------|
| 751-10722 | Cylinder Head Assembly         | —        |
|           | Valve Cover Gasket             | 47       |
|           | Plate Push Rod Guide           | 49       |
|           | Pivot Bolt                     | 50       |
|           | Rocker Arm                     | 51       |
|           | Valve Adjusting Nut            | 52       |
|           | Pivot Locking Nut              | 53       |
|           | Cylinder Head Complete         | 54       |
|           | Cylinder Head Gasket           | 55       |
|           | Gasket Muffler                 | 59       |
|           | Exhaust Valve                  | 98       |
|           | Valve Seal                     | 99       |
|           | Spring Valve                   | 100      |
|           | Exhaust Valve Spring Retainer  | 101      |
|           | Exhaust Valve Adjuster         | 102      |
|           | Intake Valve                   | 103      |
|           | Internal Valve Spring Retainer | 104      |
| 751-10723 | Gasket Kit - Complete          | —        |
|           | Crankcase Cover Gasket         | 10       |
|           | O-ring, 5.2 × 1.9              | 15       |
|           | Oil-Draining Pipe              | 18       |
|           | Washer, 10 × 16 × 1.5          | 19       |
|           | Drain Bolt, 10 × 1.25          | 20       |
|           | Oil Seal, 25 × 41.25 × 6       | 21       |
|           | Gasket                         | 42       |
|           | Valve Cover Gasket             | 47       |
|           | Cylinder Head Gasket           | 55       |
|           | Gasket Muffler                 | 59       |
|           | Carburetor Insulator Gasket    | 61       |
|           | Carburetor Insulator           | 62       |
|           | Carburetor Gasket              | 63       |
|           | Push Rod                       | 97       |
|           | Exhaust Valve                  | 98       |
|           | Intake Valve                   | 103      |

# 179/208 cc ZS 365/370-SUA Engine

| Part No.  | Description                   | Ref. No.         |
|-----------|-------------------------------|------------------|
| 751-10952 | Gasket Kit - External         | —                |
|           | Valve Cover Gasket            | 47               |
|           | Gasket Muffler                | 59               |
|           | Carburetor Insulator Gasket   | 61               |
|           | Carburetor Insulator          | 62               |
|           | Gasket Carburetor             | 63               |
| 751-10974 | Carburetor Assembly (365-SUA) | 65               |
| 751-10638 | Carburetor Assembly (370-SUA) | 65               |
|           | Fuel Drain Plug               | 122              |
|           | Fuel Cup Fixed Bolt Packing   | 123              |
|           | Fuel Drain Plug               | 124              |
|           | Fuel Drain Plug Gasket        | 125              |
|           | Fuel Cup                      | 126              |
|           | Float                         | 127              |
|           | Floating Pin                  | 128              |
|           | Needle Valve Spring           | 129              |
|           | Needle Valve                  | 130              |
|           | O-ring Packing                | 131              |
|           | Main Jet                      | 132              |
|           | Main Nozzle                   | 133              |
|           | Idle Jet Assembly             | 134              |
|           | Idle Speed Adjusting Screw    | 135              |
|           | Carburetor Body               | 136              |
|           | Fiber Seal                    | 137              |
|           | Choke Plate                   | 138              |
|           | Throttle Shaft                | 139              |
|           | Choke Plate                   | 140              |
|           | Choke Shaft                   | 141              |
|           | Cross Screw                   | 142              |
|           | Position Spring               | 143              |
|           | Clip                          | 144              |
|           | Fuel Hose                     | 145              |
|           | Primer Base                   | 146              |
|           | Primer Bulb                   | 147              |
| 751-10641 | Oil Drain Assembly            | 18,<br>19,<br>20 |
| 751-10646 | Ignition Module               | 22               |
| 751-10719 | Stator                        | 28               |
| 751-10805 | Flywheel                      | 30               |
| 751-10909 | Cooling Fan                   | 31               |

| Part No.    | Description                               | Ref. No.    |
|-------------|---|-------------|
| 751-10911   | Starter Cup                               | 32          |
| 751-10642A  | Muffler Shroud                            | 37          |
| 751-10643   | Muffler Shield                            | 40          |
| 751-10644   | Muffler Complete<br>Exhaust Pipe          | 41,<br>43   |
| 751-10666   | Gasket                                    | 42          |
| 751-10657   | Muffler Stud Assembly, 8 x 34             | 57          |
| 751-10292   | Spark Plug                                | 58          |
| 751-10640   | Choke Push Rod                            | 66          |
| 751-10635   | Air Filter Heating Pipe Cover             | 69          |
| 751-10637   | Key Switch                                | 70          |
| 751-10630   | Key                                       | 71          |
| 751-10634   | Shroud                                    | 72          |
| 751-10636   | Choke Knob                                | 73          |
| 751-10654   | Spring Governor                           | 77          |
| 751-10664   | Spring Throttle Return                    | 78          |
| 751-10665   | Rod Governor                              | 79          |
| 751-10758   | Throttle Control Assembly                 | 81          |
| 751-10757   | Throttle Control Knob                     | 82          |
| 751-10645A  | Electric Starter, 110v                    | 84          |
| 751-10648   | Push Rod Kit                              | 97          |
| 751-10647   | Valve Kit                                 | 98,<br>103  |
| 751-10655   | Dipstick                                  | 107         |
| 751-10656   | Dipstick Base                             | 108         |
| 751-10662   | Dipstick Decoration Cover                 | 110         |
| 751-10649   | Fuel Tank Cap                             | 111         |
| 751-10663A  | Blower Housing                            | 112         |
| 751-10652   | Fuel Filter                               | 113         |
| 751-10653A  | Fuel Tank                                 | 115         |
| 751-10651   | Nipple Fuel Tank                          | 116         |
| 751-10650   | Fuel Line Kit                             | 117,<br>118 |
| 751-10658   | Recoil Starter Assembly<br>Starter Handle | 121<br>—    |
| 751-10639   | Primer                                    | 147         |
| 751-10307   | Woodruff Key                              | 149         |
| 952Z370-SUA | Complete 370-SUA Engine                   | —           |
| 952Z365-SUA | Complete 365-SUA Engine                   | —           |