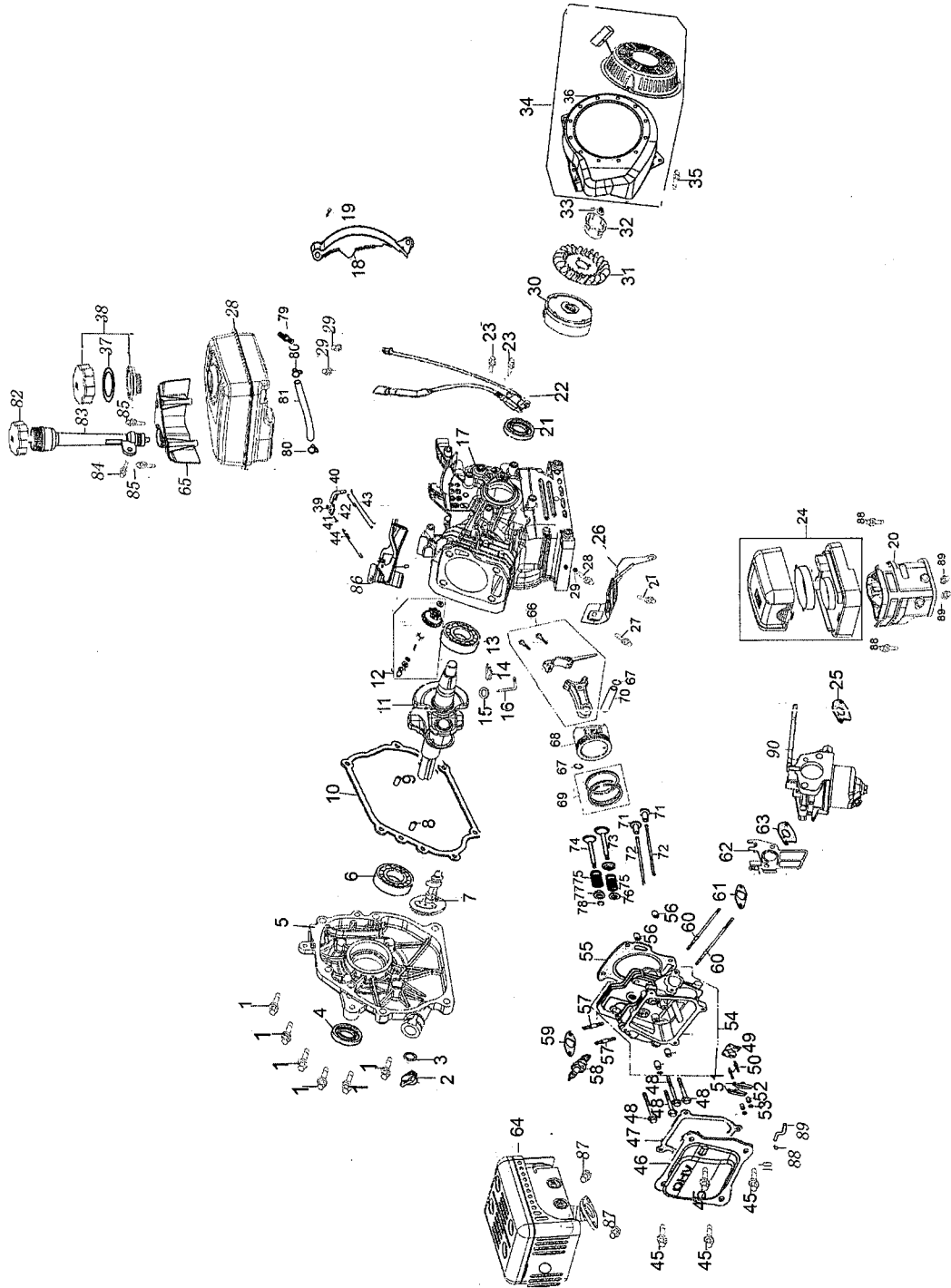


# Troy-Bilt Engine (170-T0)



## Troy-Bilt Engine (170-T0)

Part No.	Part Description	Ref No.	Qty.	Part No.	Part Description	Ref No.	Qty.
751-10806	Air Filter Heating Pipe Base	20	1	751-10798	Short Block	—	—
751-10792	Ignition Complete	22	1		Bolt	1	6
751-10818	Air Filter Housing	24	1		Oil Filler Plug	2	1
751-10794	Air Filter	24	1		O-Ring	3	1
751-10796	Fuel Tank	28	1		Oil Seal	4	1
751-10790	Recoil Starter Assembly	34	1		Left Crankcase Cover	5	1
751-10649	Fuel Filler Cap Complete	38	1		Radial Ball Bearing	6	1
751-10654	Governor Spring	44	1		Camshaft Assembly	7	1
751-10657	Stud 8 x 34	57	2		Dowel Pin	8	1
751-10292	Spark Plug	58	1		Dowel Pin	9	1
751-10793	Muffler	64	1		Case Cover Packing	10	1
751-10662	Dipstick Decoration Cover	65	1		Crankshaft Complete	11	1
751-10648	Push Rod Kit	71/72	—		Governor Kit	12	1
	Valve Lifter	71	2		Radial Ball Bearing	13	1
	Push Rod	72	2		Lock Pin	14	1
751-10647	Valve Kit	73/74	—		O-Ring	15	1
	Inlet Valve	73	1		Governor Arm	16	1
	Exhaust Valve	74	1		Crankcase Complete	17	1
751-10651	Fuel Tank Nipple	79	1		Oil Seal	21	1
751-10655	Dipstick	82	1		Carburetor Packing	25	1
751-10656	Engine/Dipstick Cover	83	1		Bolt	28	1
751-10797	Carburetor	90	1		Nut	29	2
751-10799	Cylinder Head	—	—		Head Cover Gasket	47	1
	Rocker Arm	51	2		Cylinder Head Gasket	55	1
	Valve Adjusting Nut	52	2		Carburetor Insulator Packing	61	1
	Pivot Locking Nut	53	2		Carburetor Insulator	62	1
	Cylinder Head Complete	54	1		Connecting Rod Assembly	66	1
	Dowel Pin	56	2		Piston Pin Clip	67	2
	Muffler Gasket	59	1		Piston	68	1
					Piston First Ring Set	69	1
					Piston Pin	70	1
				751-10307	Flywheel Key (Not Shown)	—	—
				751-10800	Carb. Kit Major (Not Shown)	—	—
				751-10801	Gasket Kit — Ext. (Not Shown)	—	—
				751-10802	Gasket Kit — Comp. (Not Shown)	—	—